

THE RICHMOND

PLOT 5



- 3 Spacious Double Bedrooms
- Large Open Plan Kitchen / Dining / Living
- Pantry
- Separate Utility
- Family Bathroom & Separate W/C
- En-suite to Bedroom 1
- Built-in Wardrobe to Bedroom 1
- Single Garage & Off-Road Parking
- Energy Efficient Materials Throughout

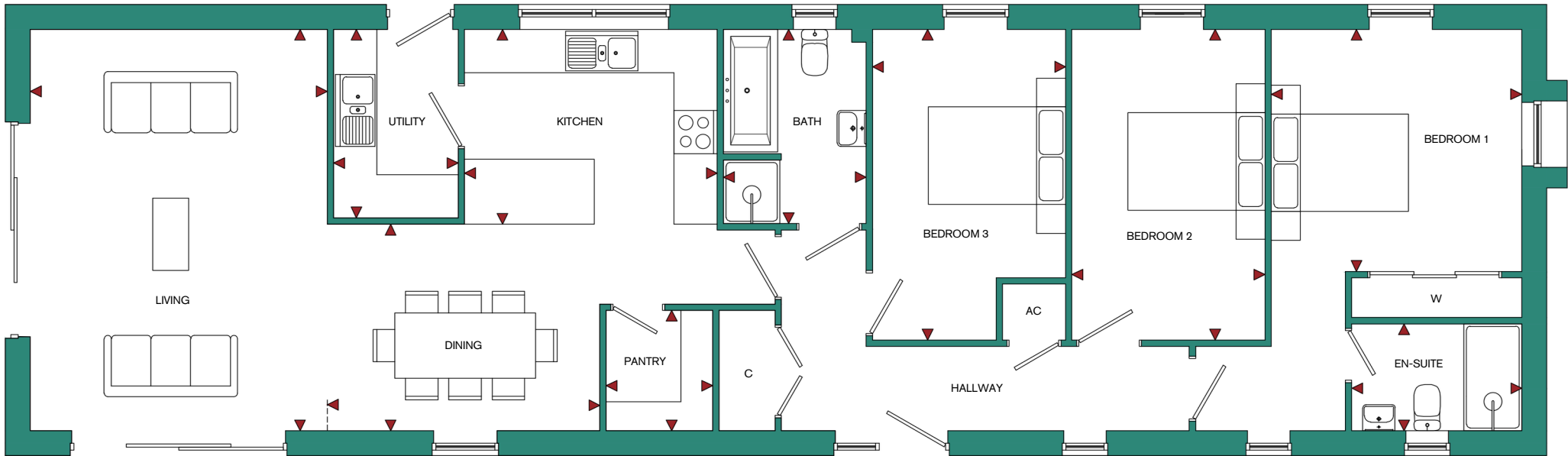
CGIs are an indicative representation of the external finish of this house type on one of the properties on this development. The final appearance of each property may need to be altered during the construction process, particularly when dealing with ground levels.



THE RICHMOND

FLOOR PLAN

GROUND FLOOR



ROOM	IMPERIAL / "	METRIC / mm
Living	13' 6" x 18' 3"	4115 x 5560mm
Kitchen	11' 6" x 8' 10"	3500 x 2700mm
Dining	12' 5" x 9' 5"	3775 x 2860mm
Utility	5' 8" x 8' 7"	1725 x 2612mm
Pantry	4' 10" x 5' 6"	1475 x 1668mm
Bedroom 1	11' 5" x 11' 0"	3468 x 3354mm
Bedroom 2	8' 9" x 14' 2"	2675 x 4305mm
Bedroom 3	8' 9" x 14' 2"	2675 x 4305mm
Bathroom	6' 6" x 8' 10"	1975 x 2691mm
En-Suite	7' 9" x 4' 10"	2354 x 1480mm

TOTAL FLOOR AREA
1232ft² / 114.5m²