

# THE WINDSOR

PLOT 3



- 4 Spacious Double Bedrooms
- Large Open Plan Kitchen / Dining / Living
- Large Separate Sitting Room
- Separate Utility
- Family Bathroom & Downstairs W/C
- En-suite to Bedroom 1
- Built-in Wardrobe to Bedroom 1
- Single Garage & Off-Road Parking
- Energy Efficient Materials Throughout

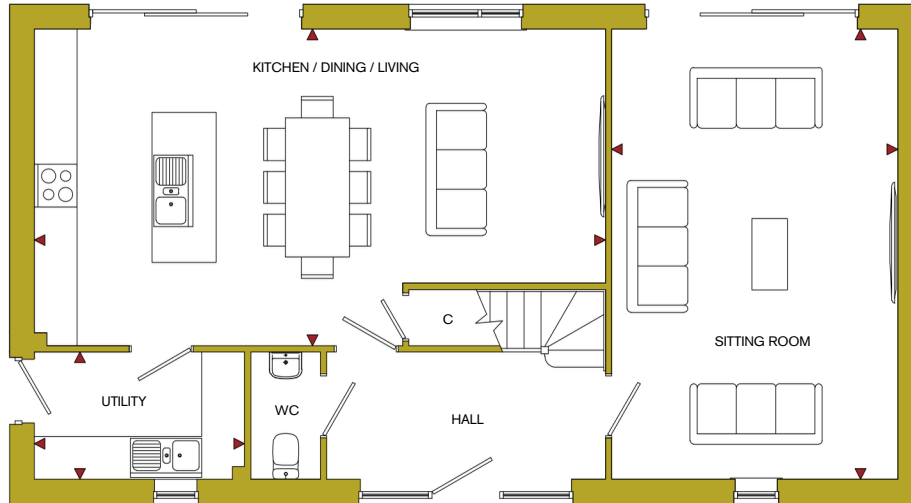
CGIs are an indicative representation of the external finish of this house type on one of the properties on this development. The final appearance of each property may need to be altered during the construction process, particularly when dealing with ground levels.



# THE WINDSOR

## FLOOR PLAN

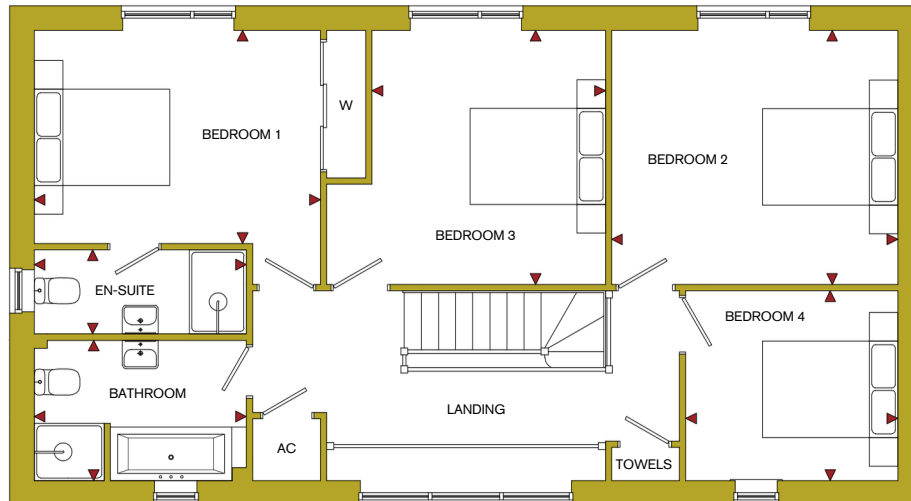
### GROUND FLOOR



ROOM	IMPERIAL / "	METRIC / mm
Sitting Room	13' 2" x 20' 9"	4012 x 6310mm
Kitchen/Dining/Living	26' 4" x 14' 7"	8010 x 4437mm
Utility	9' 8" x 5' 10"	2949 x 1785mm

**TOTAL FLOOR AREA**  
1640ft<sup>2</sup> / 152.4m<sup>2</sup>

### FIRST FLOOR



ROOM	IMPERIAL / "	METRIC / mm
Bedroom 1	13' 2" x 9' 10"	4012 x 2986mm
Bedroom 2	13' 2" x 11' 8"	4012 x 3562mm
Bedroom 3	10' 9" x 11' 8"	3272 x 3562mm
Bedroom 4	9' 9" x 8' 9"	2974 x 2660mm
Bathroom	9' 9" x 6' 6"	2974 x 1968mm
En-Suite	9' 9" x 3' 11"	2974 x 1180mm