

The *JAYWICK* (Plot 5)

4 Bedroom Detached Home



The JAYWICK (Plot 5)

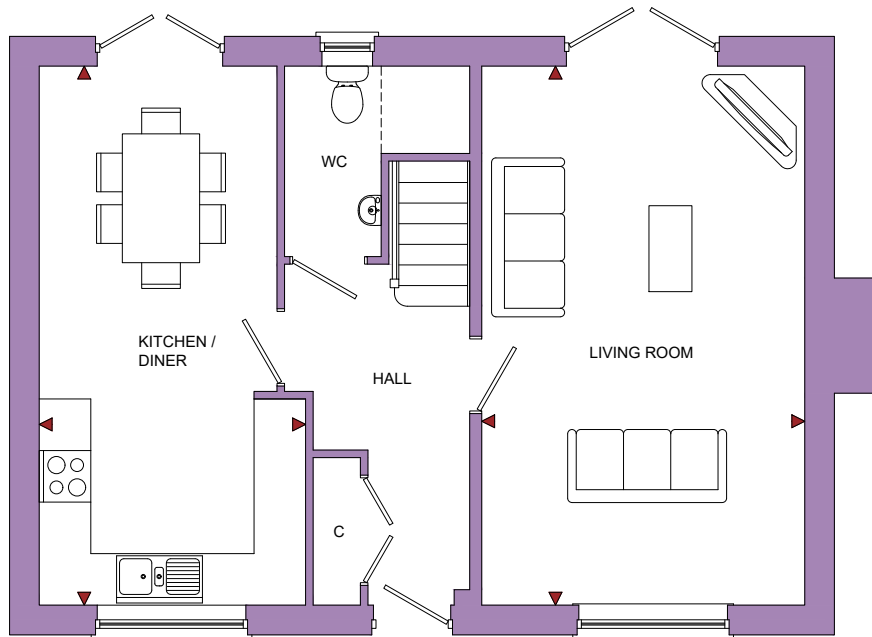
4 Bedroom Detached Home

The Vines

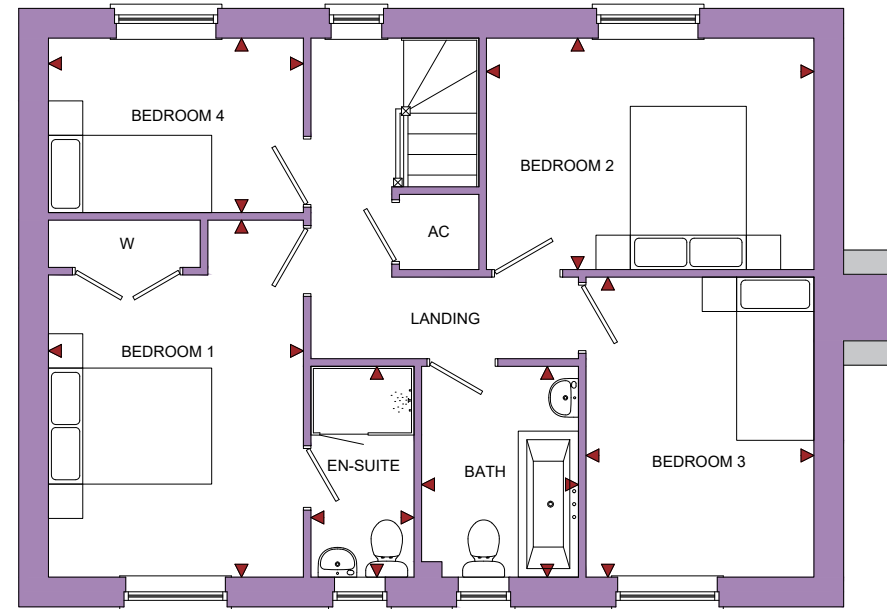
Redmarley D'Abitot, Gloucestershire, GL19 3HS

ROOM	IMPERIAL / "	METRIC / mm
Living Room	12' 4" x 20' 7"	3760 x 6275mm
Kitchen / Diner	10' 2" x 20' 7"	3100 x 6275mm

ROOM	IMPERIAL / "	METRIC / mm
Bedroom 1	9' 9" x 13' 8"	2967 x 4156mm
Bedroom 2	12' 6" x 8' 10"	3812 x 2695mm
Bedroom 3	8' 9" x 11' 6"	2654 x 3492mm
Bedroom 4	9' 9" x 6' 8"	2968 x 2032mm
Bathroom	6' 0" x 8' 1"	1825 x 2455mm
En-Suite	3' 11" x 8' 1"	1200 x 2455mm



GROUND FLOOR



FIRST FLOOR

TOTAL FLOOR AREA
1204ft² / 111.8m²

www.bellhomes.com

bellhomes

the name that stands for quality homes

We strive to make each home and development as varied and interesting as possible. Therefore the above is for illustration purposes only and individual properties may vary. Please ask for details of specific properties. Every care has been taken with the preparation of this information, which has been produced for your guidance only and does not form part of a contract. The Plans are NOT TO SCALE. Please do not use this information for purchase of furnishings and furniture.

The Vines, Redmarley D'Abitot, Gloucestershire, GL19 3HS

The Jaywick

Key Features/Included Specification

- Help to Buy Available
- Choice of Kitchen and Worktops
- Choice of Wall and Floor Tiles to Kitchen and Bathrooms
- Choice of Carpets
- Bosch Double Oven, Hob & Chimney Hood
- Bosch Fully Integrated Full Height Fridge/Freezer
- Downlighters to Kitchen and Bathrooms
- En-suite to Main Bedroom
- Choice of Electric Fire and Surround or Woodburning Stove
- Large Living Area with French Doors to Rear Garden
- Open Plan Kitchen/Dining Room with French Doors to Rear Garden
- Downstairs W/C
- Hardwood Internal Doors with Chrome Ironmongery
- Garage with 2 Additional Parking Spaces
- Electric Car Charging Point
- Grey UPVC Windows & Fascia
- Extensive Garden with Views of Surrounding Countryside
- Great Location in Popular Village

