

The *BREAMORE* (Plot 3)

4 Bedroom Detached Home



The **BREAMORE** (Plot 3)

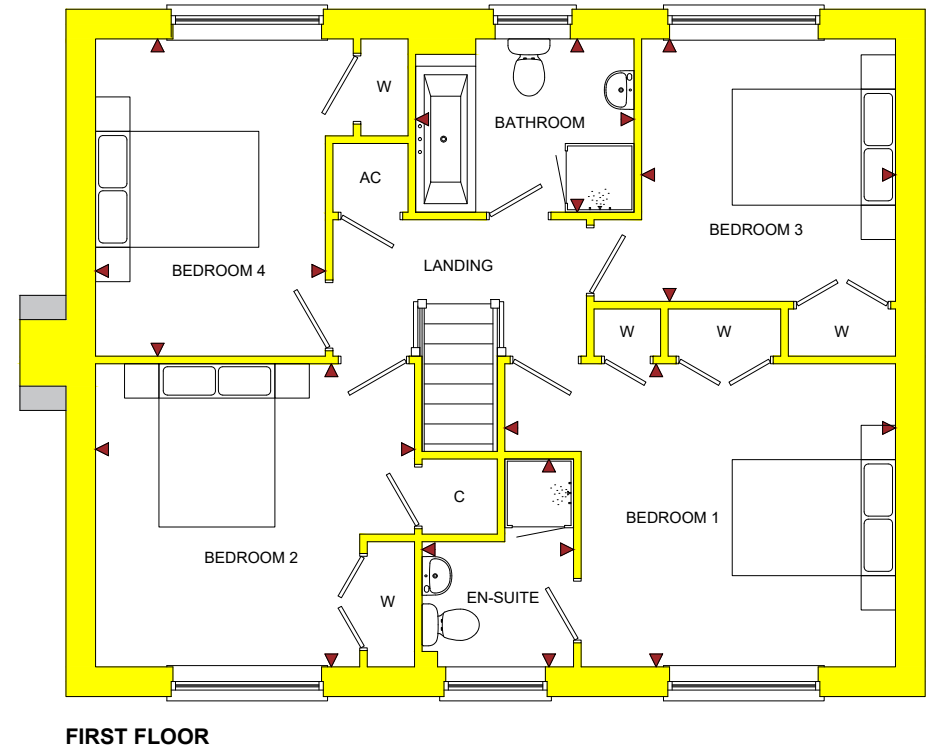
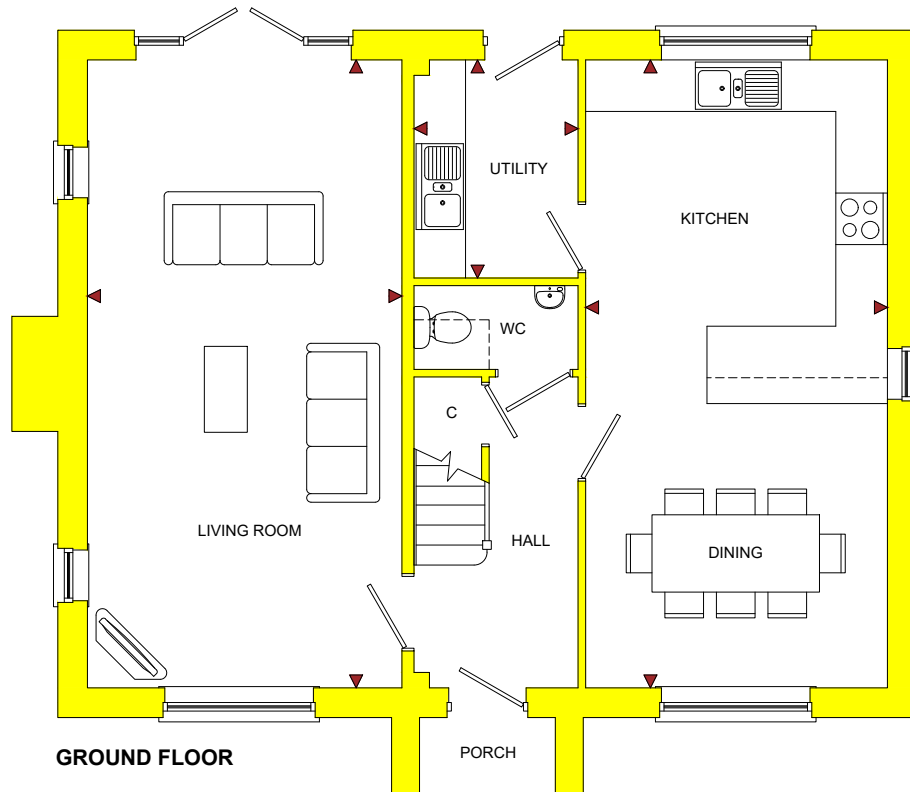
4 Bedroom Detached Home

The **Vines**

Redmarley D'Abitot, Gloucestershire, GL19 3HS

ROOM	IMPERIAL / "	METRIC / mm
Living Room	12' 0" x 24' 0"	3660 x 7310mm
Kitchen / Diner	11' 6" x 24' 0"	3512 x 7310mm
Utility	6' 3" x 8' 4"	1910 x 2540mm

ROOM	IMPERIAL / "	METRIC / mm
Bedroom 1	14' 11" x 11' 7"	4547 x 3529mm
Bedroom 2	12' 2" x 11' 7"	3712 x 3529mm
Bedroom 3	9' 8" x 10' 0"	2955 x 3056mm
Bedroom 4	8' 9" x 12' 2"	2674 x 3694mm
Bathroom	8' 4" x 6' 8"	2542 x 2018mm
En-Suite	5' 10" x 7' 11"	1763 x 2420mm



TOTAL FLOOR AREA
1465ft² / 136.1m²

www.bellhomes.com

bellhomes

the name that stands for quality homes

We strive to make each home and development as varied and interesting as possible. Therefore the above is for illustration purposes only and individual properties may vary. Please ask for details of specific properties. Every care has been taken with the preparation of this information, which has been produced for your guidance only and does not form part of a contract. The Plans are NOT TO SCALE. Please do not use this information for purchase of furnishings and furniture.

The Vines, Redmarley D'Abitot, Gloucestershire, GL19 3HS

The Breamore

Key Features/Included Specification

- Help to Buy Available
- Choice of Kitchen and Worktops
- Choice of Wall and Floor Tiles to Kitchen and Bathrooms
- Choice of Carpets
- Hardwood Staircase & Internal Doors
- Bosch Double Oven, Hob & Chimney Hood
- Bosch Fully Integrated Dishwasher & Full Height Fridge/Freezer
- Downlighters to Kitchen and Bathrooms
- Under Pelmet Lighting to Kitchen
- Choice of Electric Fire and Surround or Woodburning Stove
- Fully Integrated Security System
- Utility
- Large Kitchen/Dining Area with Breakfast Bar
- Large Lounge with French Doors to Rear Garden
- En-suite to Main Bedroom
- 4 Double Bedrooms with Fitted Wardrobes
- Single Garage with 2 Additional Parking Spaces
- Electric Car Charging Points
- Optional Rear Access to Large Communal Garden and Wildflower Area
- Great Location in Popular Village

