

Grosvenor Lodge (8 Covent Garden)

4 Bedroom Detached Home

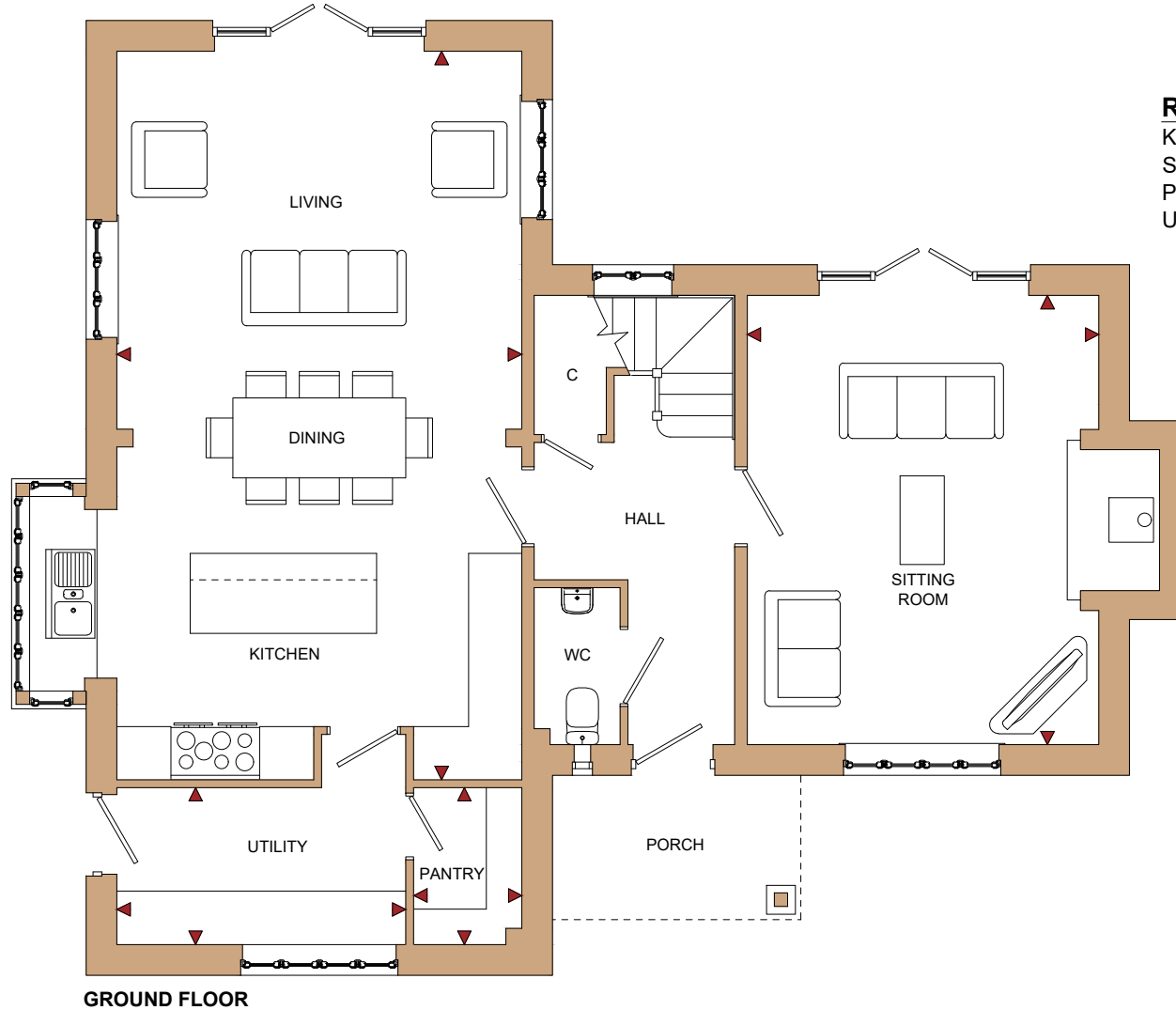


GROSVENOR LODGE

4 Bedroom Detached Home

COVENT GARDEN

Redmarley D'Abitot, Gloucestershire, GL19 3JR



ROOM	IMPERIAL / "	METRIC / mm
Kitchen / Living / Diner	26' 11" x 14' 12"	8204 x 4560mm
Sitting Room	16' 7" x 13'	5060 x 3960mm
Pantry	5' 10" x 4'	1767 x 1217mm
Utility	5' 10" x 10' 8"	1767 x 3254mm

TOTAL FLOOR AREA
1712ft² / 159.1m²

www.bellhomes.com


bellhomes

the name that stands for quality homes

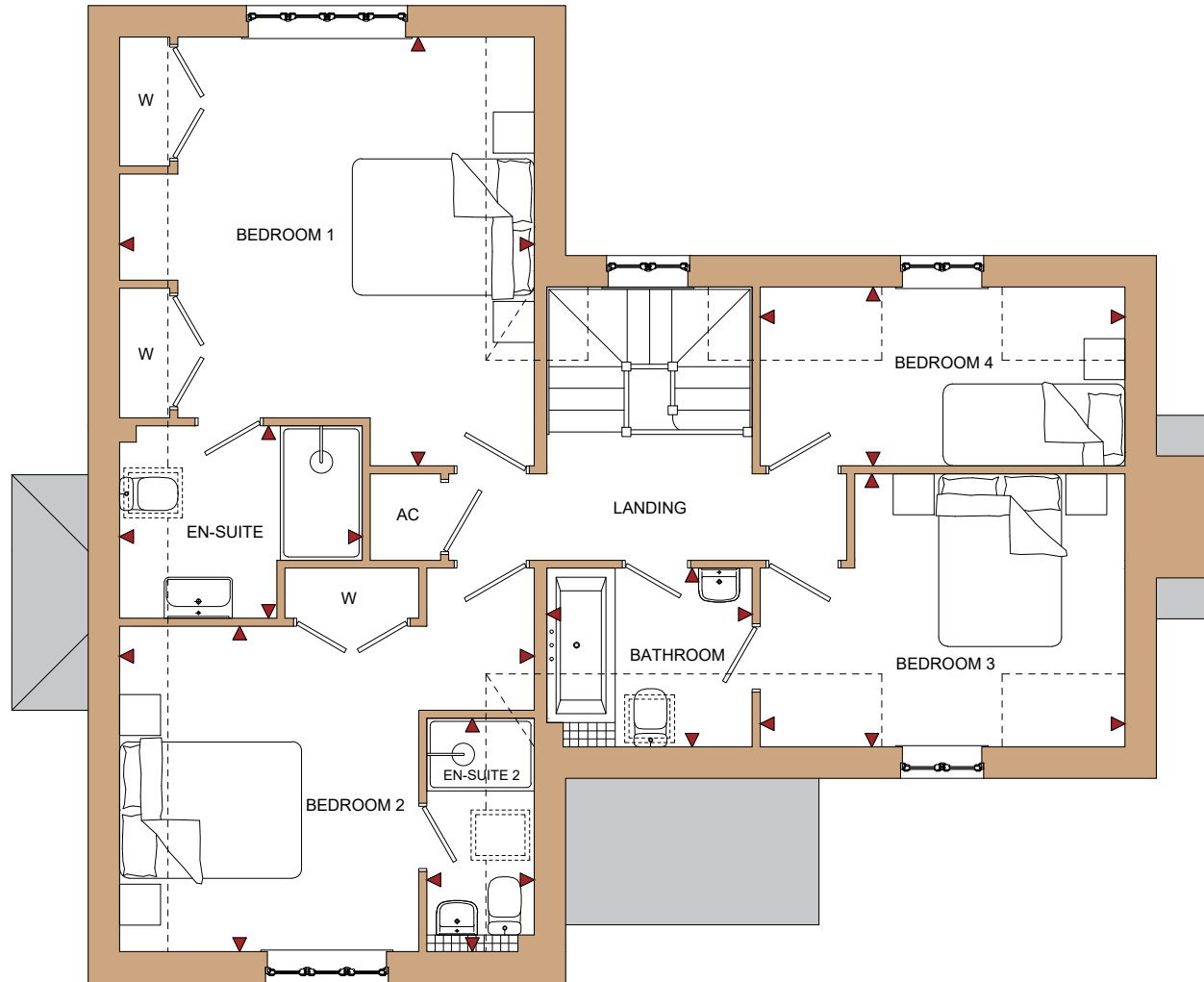
We strive to make each home and development as varied and interesting as possible. Therefore the above is for illustration purposes only and individual properties may vary. Please ask for details of specific properties. Every care has been taken with the preparation of this information, which has been produced for your guidance only and does not form part of a contract. The Plans are NOT TO SCALE. Please do not use this information for purchase of furnishings and furniture.

GROSVENOR LODGE

4 Bedroom Detached Home

COVENT GARDEN

Redmarley D'Abitot, Gloucestershire, GL19 3JR



ROOM	IMPERIAL / "	METRIC / mm
Bedroom 1	15' 6" x 14' 12"	4717 x 4560mm
Bedroom 2	11' 10" x 14' 12"	3579 x 4560mm
Bedroom 3	9' 10" x 13' 2"	3005 x 4012mm
Bedroom 4	6' 6" x 13' 2"	1967 x 4012mm
Bathroom	6' 6" x 7' 5"	1967 x 2260mm
En-Suite	6' 12" x 8' 9"	2118 x 2669mm
En-Suite 2	8' 5" x 3' 11"	2568 x 1180mm

TOTAL FLOOR AREA
1712ft² / 159.1m²

FIRST FLOOR

www.bellhomes.com

bellhomes
the name that stands for quality homes

We strive to make each home and development as varied and interesting as possible. Therefore the above is for illustration purposes only and individual properties may vary. Please ask for details of specific properties. Every care has been taken with the preparation of this information, which has been produced for your guidance only and does not form part of a contract. The Plans are NOT TO SCALE. Please do not use this information for purchase of furnishings and furniture.